

<https://doi.org/10.25221/fee.443.2>

<http://zoobank.org/References/E6CA2005-9E38-40E1-B86F-CA8475B9A9F4>

NEW AND LITTLE KNOWN REPRESENTATIVES OF THE GENUS
CHRYSOLINA MOTSCHULSKY, 1860 (COLEOPTERA:
CHRYSOMELIDAE) FROM CHINA

Yu. E. Mikhailov^{1, 2)}

1) Ural State Forest Engineering University, Sibirsky trakt, 37, Yekaterinburg 620100, Russia. E-mail: yuemikhailov@gmail.com

2) Ural Federal University, Mira str., 19, Yekaterinburg 620002, Russia.

Summary. *Chrysolina tshingilica* sp. n. is described from Chinggil (Qinghe) county in the Xinjiang Uygur Autonomous Region. It is the first representative of subgenus *Arctolina* Kontkanen, 1959 in the Chinese part of Altai. Slightly broadened male tarsi, flat intervals and confused rows of elytral punctures readily distinguish new species from known *Arctolina*. Lectotypes of *Chrysolina lobicollis* Fairmaire, 1887 and *Ch. pubitarsis* Bechyné, 1950 are designated and redescribed; both species belongs to the subgenus *Allohypericia* Bechyné, 1950. *Ch. lobicollis* Fairmaire, 1887 is resurrected from synonymy with *Ch. (Anopachys) aurichalcea* (Gebler, 1825) and synonymised with *Ch. aeruginosa poricollis* (Motschulsky, 1860); *Ch. pubitarsis* stat. resurr. is resurrected from synonymy with *Ch. (Hypericia) difficilis ussuriensis* (Jacobson, 1901).

Key words: *Chrysolina*, *Allohypericia*, *Arctolina*, taxonomy, new species, lectotype designation, Altai, China.

Ю. Е. Михайлов. Новые и малоизвестные представители рода *Chrysolina* Motschulsky, 1860 (Coleoptera: Chrysomelidae) из Китая // Дальневосточный энтомолог. 2021. N 443. С. 6-16.

Резюме. Из уезда Чингиль (Циньхэ) Синцзян-Уйгурского автономного района описан *Chrysolina tshingilica* sp. n. – первый представитель подрода *Arctolina* Kontkanen, 1959 из китайской части Алтая. Слабо расширенные лапки самца, плоские междуярдья и спутанные точечные ряды надкрылий легко отличают новый вид от уже известных *Arctolina*. Обозначены и переописаны лектотипы *Chrysolina lobicollis* Fairmaire, 1887 и *Ch. pubitarsis* Bechyné, 1950. Показано, что оба вида относятся к подроду *Allohypericia* Bechyné, 1950. *Ch. lobicollis* Fairmaire, 1887 восстановлен из синонимов *Ch. (Anopachys) aurichalcea* (Gebler, 1825) и сведен в синонимы к *Ch. aeruginosa poricollis* (Motschulsky, 1860), а *Ch. pubitarsis* stat. resurr. восстановлен из синонимов *Ch. (Hypericia) difficilis ussuriensis* (Jacobson, 1901).

INTRODUCTION

In spite of the fact that several summarizing books were published recently, namely “Fauna Sinica” (Yang *et al.*, 2014), “Chinese leaf beetles” (Yang *et al.*, 2015) and “*Chrysolina* of

the World” (Bieńkowski, 2019), still a number of problems remain unsolved in the systematic and taxonomy of Chinese leaf beetles. The preparation of new edition of the Catalogue of Palaearctic Coleoptera encouraged special efforts to resolve these problems and therefore some of them are addressed and elucidated here.

MATERIAL AND METHODS

This paper is based on my examination of the type material of Chrysomelidae in the collection of National Museum in Prague, Czech Republic and the specimens collected by I.I. Kabak in the Chinese part of Altai. The following acronyms are used to designate collections, where the material mentioned in the paper is housed: MNHNP – Muséum National d’Histoire Naturelle, Paris, France; NHMB – Naturhistorische Museum Basel, Switzerland; NMPC – National Museum (Národní muzeum), Prague, Czech Republic; ZIN – Zoological Museum of Moscow State University, Russia; YMC – Yuri Mikhailov personal collection, Yekaterinburg, Russia.

All measurements were made using an ocular grid mounted on MBS-10 stereomicroscope. Total body length was measured from the anterior edge of pronotum to the elytral apex, body width was measured in the broadest part of elytra. In the descriptions of *Chrysolina* species the list of necessary morphological features proposed by Bieńkowski (2019) was taken into account. The exact label data are cited for all type specimens. Separate labels are divided with “|”, separate lines of one label – with “/”. Other comments and remarks: p – preceding data are printed, h – preceding data are handwritten, w – white label, r – red label, y – yellow label.

TAXONOMY

Genus *Chrysolina* Motschulsky, 1860

Subgenus *Allohypericia* Bechyné, 1950

Allohypericia Bechyné, 1950: 159. Type species: *Chrysomela lobicollis* Fairmaire, 1887 [= *Chrysolina aeruginosa poricollis* (Motschulsky, 1860)], by original designation.

Bourdonneana Kippenberg, 2010: 68. Type species: *Chrysomela aeruginosa* Faldermann, 1835, by original designation. Synonymised with *Allohypericia* Bechyné, 1950 by Bieńkowski, 2019: 5.

REMARKS. *Chrysomela lobicollis* Fairmaire, 1887 was originally designated as a type species of the subgenus *Allohypericia* Bechyné, 1950. Subsequent authors (Gressitt & Kimoto, 1963; Mohr, 1966; Bieńkowski, 2001, 2007) considered *Ch. lobicollis* conspecific to *Ch. aeruginosa*. But Bourdonné (2010) examined a type specimen of *Ch. lobicollis* in MNHNP and found that this taxon belongs to the subgenus *Anopachys* Motschulsky, 1860. Subsequently the name *Allohypericia* became a junior synonym of *Anopachys* (Bourdonné, 2010) and therefore the new subgenus *Bourdonneana* Kippenberg, 2010 was established for the species earlier included in *Allohypericia* except for *Ch. lobicollis*.

Bieńkowski (2019) disagreed with the above mentioned acts and stated that Bechyné (1950) incorrectly and unintentionally identified the type species *Ch. lobicollis*. He proved this point of view by the examination of a specimen from the G. Frey’s collection (NHMB) with the label: "*Chrysolina lobicollis* Frm. Det. Dr. J. Bechyné 1950" identified as *Ch. aeruginosa poricollis*. That is why Bieńkowski (2019) for the stability of the nomenclature used Article 70.3 of the Code (ICZN, 1999) and designated *Taeniossticha poricollis* Motschulsky,

1860 as a type species of the subgenus *Allohypericia* to make this subgeneric name valid. However, this act proved to be unnecessary because of the present designation of lectotype of *Chrysomela lobicollis* found in NMPC. The designation of the lectotype below restores the initial status of *Chrysomela lobicollis* as a type species of *Allohypericia* by the original designation and once again proves the validity of *Allohypericia* that is not a synonym of *Anopachys*.

***Chrysolina (Allohypericia) aeruginosa poricollis* (Motschulsky, 1860)**

Figs 1, 2

Taeniosticha poricollis Motschulsky, 1860: 228 (lectotype – ♀, "Mongolie" (refers to Inner Mongolia), in ZMMU, designated by Bieńkowski, 2001: 108; examined).

Chrysolina (Allohypericia) aeruginosa poricollis: Bieńkowski, 2001: 108; Yang *et al.*, 2015: 66; Bieńkowski, 2019: 46;

Chrysomela lobicollis Fairmaire, 1887: 331 (lectotype – ♀, "Chine: Péking"; in NMPC; here designated).

Chrysolina (Allohypericia) lobicollis: Bechyné, 1950: 159;

Chrysolina (Anopachys) lobicollis: Bourdonne, 2010: 65 (nec *Chrysolina lobicollis* Fairmaire, 1887). Synonymised with *Chrysolina (Anopachys) aurichalcea* (Gebler, 1825) by Bieńkowski, 2019: 50.

Chrysolina (Allohypericia) aeruginosa lobicollis: Bechyné, 1952: 382.

Chrysomela (Pezocrosita) aeruginosa lobicollis: Mohr, 1966: 101.

Chrysomela mandarina Achard, 1922: 16 (syntypes – 2♂, ♀, "Chine: Tai-Yuen-Fou", in NMPC; examined). Synonymised with *Chrysomela lobicollis* Fairmaire, 1887 by Bechyné, 1950: 159.

TYPE MATERIAL EXAMINED. Lectotype of *Chrysomela lobicollis*: ♀ (Fig. 1), with labels (Fig. 2): Chine [p] Pek. [h] / A. DAVID [p, w] | lobicollis / Fairm. [h, w] | C. lobicollis / Frm. TYPE [h] / J. Achard det. [p] | TYPE [p, r] | COLL. ACHARD / MUS. PRAGENSE [p, y] | Chrysomela / aeruginosa FALD / MOHR det. 66 [p, w] | LECTOTYPUS / *Chrysomela lobicollis* / Fairmaire, 1887 / Yu. Mikhailov design. 2020 [p, r] (NMPC).

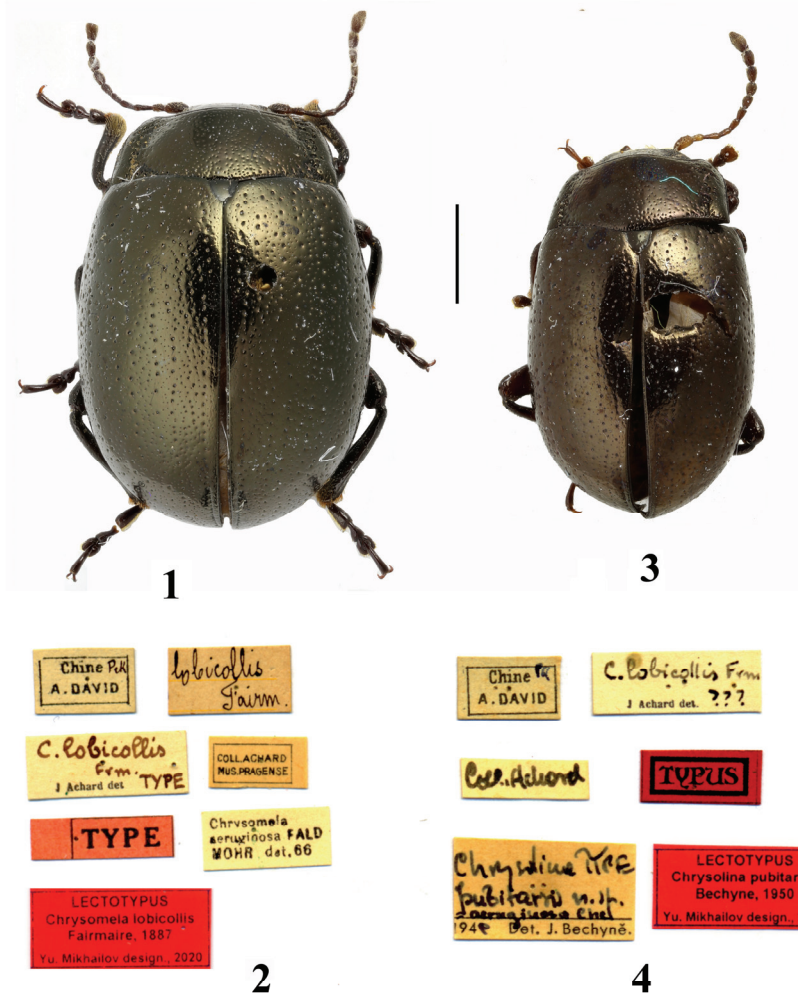
REDESCRIPTION. Female (lectotype of *Chrysomela lobicollis*). Body convex, ovate, length - 7.1 mm, width - 5.2 mm. Dorsum shining, smooth, metallic bronze; underside, legs, antennae, maxillary palpi and tarsi pitchy brown, antennomeres 1 and 2 rufous below.

Head: frontoclypeus covered with sparse coarse punctures; frontal and epicranial sutures slightly deepened. Last maxillary palpomere barrel-shaped, widely truncate apically, 1.3x longer than broad, not longer and 1.2x wider than previous palpomere. Relative length of antennomeres 1–3 as ratios 8, 5, 6. Tenth antennomere 1.7x longer than broad, eleventh antennomere – 2x. Orbital lines narrow, not reaching antennal insertion. Antenna inserted 1.2x closer to eye than to clypeus.

Thorax: pronotum transverse, 2.3x broader than long, broadest at base; pronotal disc evenly convex, covered with dense medium sized punctures; sides straightly narrowed in basal 2/3 and rounded only at anterior angles; width between anterior angles 1.5x less than basal width. Anterior angles produced, triangular; basal angles acute; anterior side margined and ciliate; basal edge arcuately convex. Lateral sides swollen along entire length, lateral callus narrow, lateral impression moderately deep and filled with coarse punctures partly coalescent in basal half. Prothoracic hypomera slightly convex, smooth, outer side almost flat and covered with wrinkles, basal fold not pronounced; prosternal process almost flat longitudinally, covered with coarse punctures; anterolateral portion of prosternum narrow, with slightly impressed furrow medially; prosternum 1.35x shorter than metasternum; metasternum 1.1x shorter than first ventrite. Scutellum triangular, smooth.

Elytra with weak humeral callus and flat intervals, each elytron 1.9 times longer than wide, elytral length 5.7 mm. Primary punctures moderately large, scutellar row quite long, consist of 10 punctures, rows 2-9 regular, paired, punctures spaced at distance mainly twice larger than their diameter. Secondary puncturation consists of fine and medium sized punctures. Marginal stria with large sparse impressed punctures. Sutural stria distinct at apical slope. Epipleura inclined outside, visible along entire length. Hind wings absent.

Tarsi narrow, fore tarsi 2.7x as long as broad, ratio of width of fore tarsomeres 1-3 as 1.0, 0.8, 1.2. Tarsomeres 1 of all tarsi with moderately broad glabrous stripe beneath; tarsomeres 2 and 3 of hind tarsi also with glabrous stripe beneath but narrow.



Figs 1-4. Habitus in dorsal view and labels of the types. 1, 2 – *Chrysomela lobicollis* Fairmaire: 1 – lectotype, female; 2 – labels of lectotype; 3, 4 – *Ch. pubitarsis* Bechyne: 3 – lectotype, male; 4 - labels of lectotype. Scale bars = 2 mm.

Abdomen: pygidium with deep groove along entire length; ventrite 1 broadly margined on anterior edge, covered with sparse medium-sized punctures, only anterior intercoxal process covered with coarse punctures modified into deep longitudinal wrinkles. Last ventrite slightly convex, with slightly incised apex, medially almost impunctate.

REMARKS. *Chrysomela lobicollis* Fairmaire, 1887 was synonymised with *Chrysolina* (*Allohypericia*) *aeruginosa poricollis* (Motschulsky, 1860) by Bieńkowski (2001) without examination of any types. Bourdonné (2010) resurrected *Chrysomela lobicollis* from the synonymy with *Ch. aeruginosa poricollis* and transferred it to the subgenus *Anopachys*, however, in this note or later he did not give any redescription or figures and did not designate the examined specimen as lectotype. The specimen of *Ch. lobicollis* (male) from MNHNP labeled by J.-C. Bourdonné in 2002 as "holotype" was examined by Bieńkowski (2019). In fact this specimen is a syntype, because Fairmaire (1887) did not indicate a number of type specimens. The peculiar aedeagus shape of this syntype proves its position in the subgenus *Anopachys* close to *Chrysolina aurichalcea*.

However, in the collection of NMPC I found another syntype of *Chrysomela lobicollis*, a female (Fig. 1) that was studied by Bechyné (1950) because he mentioned the data from these labels. For the stability of the nomenclature according to Article 74 of the Code (ICZN, 1999) and because this has not been done before I designate this specimen as a lectotype of *Chrysomela lobicollis*.

The comparison of lectotype of *Ch. lobicollis* with the representatives of the subgenera *Anopachys* and *Allohypericia* shows that it exactly belongs to the latter (according to the original intention and taxonomical feeling of J. Bechyné). Having elytra with regular rows of large punctures, dorsum moderately shining and bronzy-black, all tarsomeres 1 with glabrous stripe beneath, pygidium with deep groove along entire length, it can be treated conspecific with *Chrysolina aeruginosa* (Faldermann, 1835). This was earlier found by Mohr (1966), who treated it as a subspecies of *Ch. aeruginosa*. But from five currently recognized subspecies of *Ch. aeruginosa* every one can be found in China (Yang et al., 2015; Bieńkowski, 2019). The nominotypical subspecies occurs in North and North-West parts of China, ssp. *chingana* Bechyné, 1952, ssp. *muralis* (Csiki, 1901) and ssp. *poricollis* (Motschulsky, 1860) in North-East part of China, and ssp. *kabana* Lopatin, 2009 in Gansu. The proper revision of these subspecies has never been done and their distribution is not well documented. However, the preliminary keys to subspecies of *Ch. aeruginosa* are available (Yang et al., 2015; Bieńkowski, 2019). According to them and the comparison with the lectotype of *Taeniosticha poricollis* Motschulsky, 1860 in ZMMU I can prove that *Chrysomela lobicollis* Fairmaire is a synonym of *Ch. aeruginosa poricollis* (Motschulsky, 1860).

***Chrysolina* (*Allohypericia*) *pubitarsis* Bechyné, 1950, stat. resurr.**

Figs 3–5

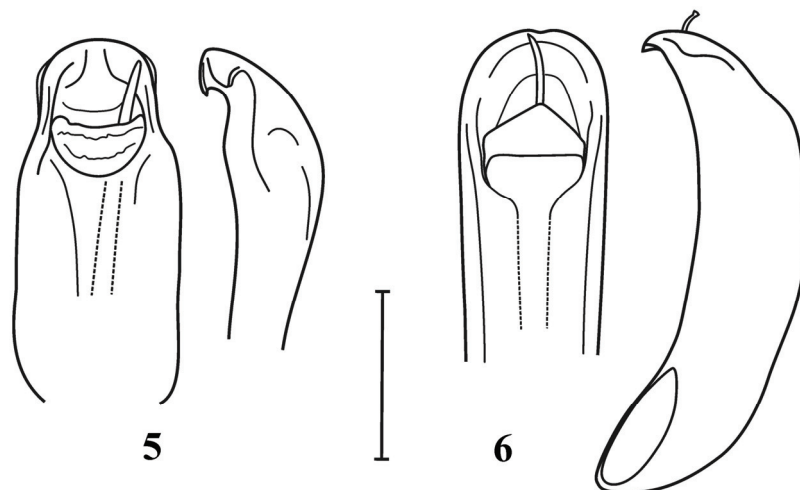
Chrysolina (*Allohypericia*) *pubitarsis* Bechyné, 1950: 160 (lectotype - ♂, "Chine: Péking"; in NMPC; designated here).

Chrysolina (*Hypericia*) *pubitarsis*: Bieńkowski, 2001: 169 (nec *Chrysolina pubitarsis* Bechyné, 1950). Synonymised with *Chrysolina* (*Hypericia*) *difficilis ussuriensis* (Jacobson, 1901: 126) by Bieńkowski, 2001: 169.

TYPE MATERIAL EXAMINED. Lectotype (Fig. 3): 1♂, with labels (Fig.4): Chine [p] Pk. [h] / A. DAVID [p, w] | C. lobicollis Frm. [h] / J. Achard det. [p] ??? [h] | Coll. Achard [h] | TYPUS [p, r] | *Chrysolina* TYPE / *pubitarsis* n. sp. / = *aeruginosa* Chen [h] / 1949 [h] Det. J. Bechyné. [p] | LECTOTYPUS / *Chrysolina pubitarsis* / Bechyné, 1950 / Yu. Mikhailov design. 2020 [p, r] (NMPC).

REDESCRIPTION. Male (lectotype). Body moderately convex, elongate, ovate; length – 6.2 mm, width – 4.1 mm. Dorsum shining, smooth, metallic bronze; underside, legs, antennae, maxillary palpi and tarsi pitchy brown, antennomeres 1 and 2 rufous.

Head: frontoclypeus densely covered with large punctures; frontal suture not pronounced, epicranial suture slightly deepened. Last maxillary palpomere barrel-shaped, truncate apically, 1.2x longer than broad, 1.3x longer and 1.1x wider than previous palpomere. Relative length of antennomeres 1–3 as ratios 7, 4, 7. Tenth antennomere 1.4x longer than broad, eleventh antennomere – 2.1x. Orbital lines narrow, not reaching antennal insertion. Antenna inserted 1.1x closer to clypeus than to eye.



Figs 5–6. Aedeagus in dorsal and ventro-lateral view. 5 – *Chrysolina pubitarsis* Bechyně (lectotype, not completely mature); 6 – *Ch. mauroi* Lopatin (holotype, China: Sichuan), modified from Bienkowski (2019). Scale bars = 0.5 mm.

Thorax: pronotum transverse, twice broader than long, broadest at base; pronotal disc evenly convex, covered with dense medium sized punctures; sides almost straight and parallel in basal 2/3 and rounded only at anterior angles; width between anterior angles 1.5x less than basal width. Anterior angles produced, triangular; basal angles acute; anterior side margined and ciliate; basal edge arcuately convex. Lateral sides swollen along entire length, but visibly margined in dorsal view, lateral callus narrow, lateral impression present along entire length, moderately deep and filled with coarse punctures partly coalescent in basal 3/4. Prothoracic hypomera slightly convex, outer side almost flat and shagreened with impression at basal 1/4 covered with merged large punctures; basal fold pronounced; prosternal process almost flat longitudinally, covered with coarse punctures; anterolateral portion of prosternum narrow, with slightly impressed furrow medially; prosternum 1.1x shorter than metasternum; metasternum 1.25x shorter than first ventrite. Scutellum triangular, smooth, with only few fine punctures near base.

Elytra with weak humeral callus and flat intervals, each elytron 2.25 times longer than wide, elytral length 4.2 mm. Primary punctures moderately large, scutellar row quite long, consist of 8–9 punctures, rows 2–9 regular, slightly paired, punctures spaced at distance mainly twice larger than their diameter. Secondary puncturation consists of very fine and fine punctures; latter rare and predominate on even intervals. Marginal stria with large sparse impressed

punctures. Sutural stria distinct at apical slope. Epipleura inclined outside, visible along entire length. Hind wings absent.

Tarsi only slightly broadened, fore tarsi 2.7x as long as broad, ratio of width of fore tarsomeres 1–3 as 1.0, 0.8, 1.2. Tarsi with entire sole beneath, only all tarsomeres 1 in basal 2/5 with short glabrous stripe beneath.

Abdomen: pygidium with impression in basal half; all ventrites with pronounced greenish luster; ventrite 1 broadly margined on anterior edge, covered with sparse medium-sized punctures, only anterior intercoxal process covered with large punctures fused with longitudinal wrinkles. Last ventrite slightly convex, apex broadly truncate, medially covered with sparse punctures. Aedeagus with slightly narrowed and broadly rounded apex and sharp denticles ventrally at its sides (Fig. 5).

DIFFERENTIAL DIAGNOSIS. Among *Allohypericia* only one species has all tarsomeres 1 entirely pubescent beneath in both sexes, namely *Ch. mauroi* Lopatin, 2005 from Sichuan. Besides tarsal pubescence it similarly has impression in basal half of pygidium and similar aedeagus shape (Fig. 6).

REMARKS. Bechyné (1950) compared *Ch. pubitarsis* with *Ch. lobicollis* and *Ch. aeruginosa* and placed it in the subgenus *Allohypericia*. Although he noted its difference from all other members of this subgenus in tarsi wholly pubescent beneath in both sexes. Bieńkowski (2001) examined one female determined by J. Bechyné as "*Ch. pubitarsis*" and found this specimen conspecific with *Ch. difficilis*. This specimen was not syntype, moreover it was collected not in Beijing, but in Manchuria. However based solely on such questionable material Bieńkowski (2001, 2019) placed *Ch. pubitarsis* in the subgenus *Hypericia* Bedel, 1892 and synonymised it with *Ch. difficilis*.

I found the type of *Chrysolina pubitarsis* in the collection of NMPC. It is a male but nobody prepared the aedeagus before. Although the specimen is not entirely mature, the aedeagus shape is clear (Fig. 5). I did not find the female syntype but according to the original description it existed and had all tarsomeres 1 entirely pubescent beneath. However, it is possible that female is not conspecific with the male type. Here I designate the lectotype of *Chrysolina pubitarsis* and confirm that it is a representative of subgenus *Allohypericia* as originally stated by J. Bechyné. The redescription is given above because the original description of this species (Bechyné, 1950) is brief and includes mainly differential diagnosis.

Subgenus *Arctolina* Kontkanen, 1959

Arctolina Kontkanen, 1959: 31. Type species: *Chrysomela birulai* Jacobson, 1910 [= *Chrysolina subsulcata* (Mannerheim, 1853)], by original designation.

COMPOSITION. *Arctolina* is arcto-boreo-montane subgenus with 19 species (Kippenberg, 2010a) known from the Arctic territories, the Urals, Altai, Saur-Tarbagatai Mountains and Dzhungarian Alatau, where the species diversity hotspot is situated. Two species from the subgenus are known from China (Yang *et al.*, 2015): *Ch. borochoensis* Lopatin, 2000 and *Ch. boreosinica* Lopatin, 2004, and both were found in Tien-Shan Mountains. The new species described below is the first representative of *Arctolina* in Mongolian Altai in general and in the Chinese part of Altai.

***Chrysolina (Arctolina) tshingilica* Mikhailov, sp. n.**

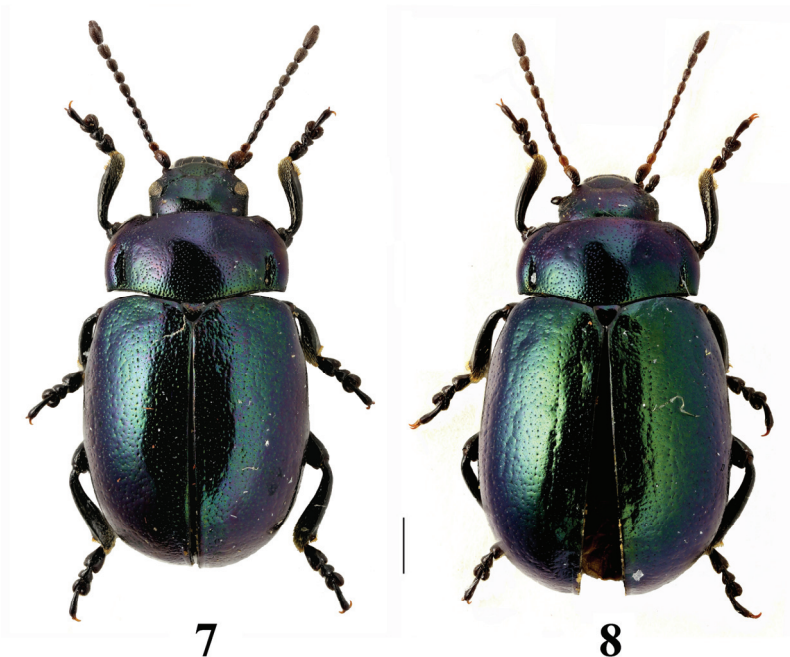
<http://zoobank.org/NomenclaturalActs/0124DA18-EF3B-48B8-B277-BD47EAAC6C80>

Figs 7–10

TYPE MATERIAL. Holotype: ♂, with labels: China, Xinjiang, S Altai Mts., / Keshtau Mt., ENE Qinghe / (Chinggil), h=2920–3345 m, / 46°48'30"N, 90°44'05"E / 46°46'16"N,

90°46'36"E / 12.08.2013 / I.I. Kabak leg. [p] | HOLOTYPUS / *Chrysolina (Arctolina) tshingilica* sp. n. / Yu. Mikhailov design. 2020 [p, r] (ZIN). Paratypes, 1♂, 5♀ with labels: locality label same as in holotype | PARATYPUS / *Chrysolina (Arctolina) tshingilica* sp. n. / Yu. Mikhailov design. 2020 [p, r] (YMC).

DESCRIPTION. Male (holotype) (Fig. 7). Moderately convex, ovate. Body length - 5.9 mm, width - 3.8 mm. Dorsum shining, finely shagreened, bicolor, elytra emerald green, pronotum and head green with violet reflex; underside and legs black, with feeble bronze reflex. Antennae, maxillary palpi and tarsi dark brown, antennomeres 1 and 2 beneath and claws rufous.

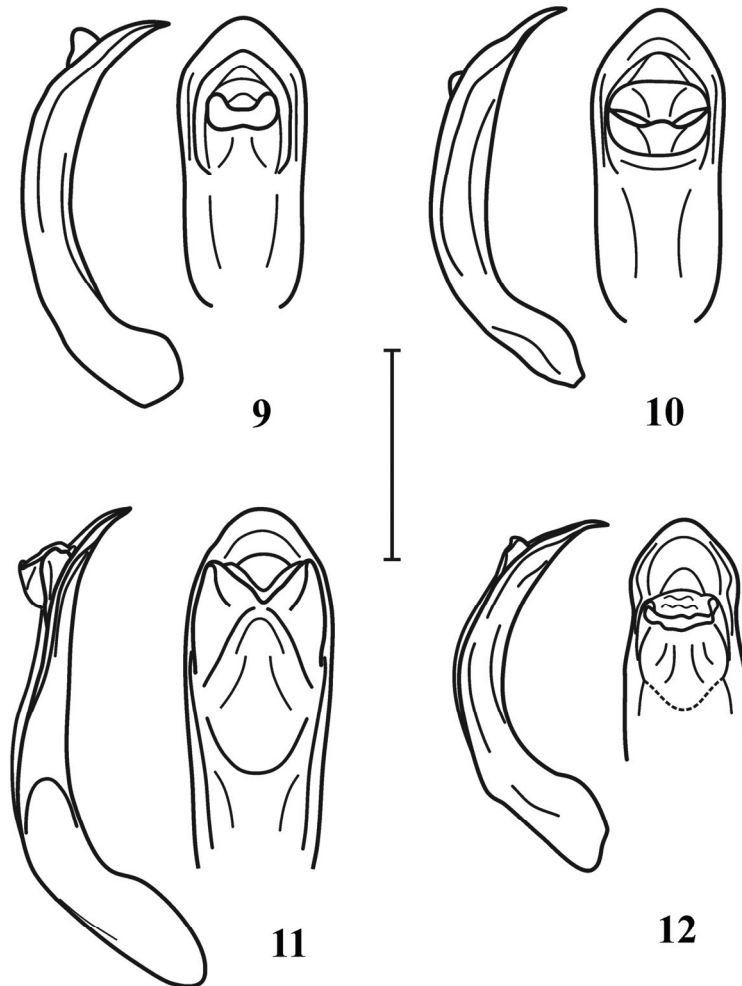


Figs 7–8. Habitus of *Chrysolina (Arctolina) tshingilica* sp. n. 7 – male (holotype); 8 – female (paratype). Scale bar = 1 mm.

Head: frontoclypeus coarsely and sparsely punctured; frontal and epicranial sutures slightly deepened. Last maxillary palpomere barrel-shaped, narrowly truncate apically, 1.2x longer than broad, 1.5x longer and 1.2x wider than previous palpomere. Relative length of antennomeres 1–3 as ratios 7, 3, 4. Tenth antennomere 1.5x longer than broad, eleventh antennomere – 2.1x. Orbital lines narrow, almost reach antennal insertion. Antenna inserted 1.2x closer to clypeus than to eye.

Thorax: pronotum transverse, almost twice (exactly 1.9x) broader than long, broadest anterior to middle; pronotal disc evenly convex, except for smooth ovate area medially covered with dense fine punctures; sides slightly rounded; width between anterior angles 1.5x less than basal width. Anterior angles moderately produced, rounded triangular; basal angles obtuse; anterior side margined and ciliate, widely incised in bracket-shape; basal edge arcuately convex; lateral sides swollen along entire length, lateral callus narrow, separated from disc by deep

groove with vertical outer border in basal 2/5 and by slight impression with large punctures in anterior part. Prothoracic hypomera slightly convex, outer side almost flat and shagreened with impression at basal 1/4 covered with merged coarse punctures; basal fold pronounced and very deep; prosternal process slightly convex longitudinally; anterolateral portion of prosternum narrow, with slightly impressed furrow medially; prosternum 1.5x shorter than metasternum; metasternum of the same length as first ventrite. Scutellum triangular, with sparse, fine punctures.



Figs 9–12. Aedeagus in lateral and dorsal view. 9, 10 – *Chrysolina (Arctolina) tshingilica* sp. n.: 9 – holotype; 10 – paratype; 11 – *Ch. (Pleurosticha) shapkini* Mikhailov et Gus’kova (Mongolia, Mongolian Altai); 12 – *Ch. borochoensis* Lopatin, paratype (China, Tien-Shan Mountains). Scale bars = 1 mm.

Elytra with very weak humeral callus and flat intervals, each elytron 2.25 times longer than wide, elytral length 4.2 mm. Medium-sized primary punctures form scutellar row of 8–9 punctures and 9 partly confused rows, from which rows 4 - 6 strongly confused. Secondary puncturation consists of very fine and fine punctures; latter almost of the same size as on pronotum, they predominate on odd intervals and together with fine wrinkles conceal puncture rows. Marginal stria with large sparse impressed punctures. Sutural stria distinct at apical slope. Epipleura inclined outside, visible along entire length. Hind wings absent.

Tarsi only slightly broadened, fore tarsi 2.5x as long as broad, ratio of width of fore tarsomeres 1–3 as 1.1, 0.9, 1.2. All tarsomeres with entire sole beneath.

Abdomen: pygidium without any impressions. Ventrite 1 broadly margined on anterior edge, covered with sparse medium-sized punctures, only anterior intercoxal process covered with large wrinkles. Last ventrite very slightly convex, with slightly incised apex, medially covered with sparse medium-sized punctures. Aedeagus (Fig. 9) laterally crescent with slightly broadened rounded triangular apex and small alae.

Variability. Male (paratype). Body length 5.4 mm, width 3.5 mm. Dorsum shining, bicolor, elytra violetish green, pronotum and head green with bronze reflex. Aedeagus slightly different from holotype (Fig. 10).

Female. Body moderately convex, obovate; length 6.1–7.1 mm, width 4.0–4.4 mm. Dorsum shining, finely shagreened, unicolor green with violet reflex, golden green or bicolor, elytra emerald green, pronotum and head green with violet or bronze reflex (Fig. 8). Underside, legs, antennae same colour as in males. Tarsi narrow, fore tarsi 2.3x as long as broad, ratio of width of fore tarsomeres 1–3 as 1.1, 0.9, 1.2. All tarsomeres with entire sole beneath.

DIFFERENTIAL DIAGNOSIS. Habitus and colour pattern is somewhat similar to the representatives of *Allohypericia*, namely *Ch. centralasiae* Lopatin, 1970 but pronotum structure and absence of wings readily distinguish the new species. The combination of characters makes it a member of the subgenus *Arctolina* and the first representative of this subgenus in the Chinese part of Altai Mountains. The closely related subgenus *Pleurosticha* Motschulsky, 1860 also has the only representative *Ch. shapkini* Mikhailov et Gus'kova, 2013 recently described from Mongolian Altai (Hovd aimak of Mongolia). This species also has flat elytral intervals but peculiar aedeagus shape with larger and much more exposed alae (Fig. 11).

Two previously known Chinese *Arctolina* species were found in Tien-Shan Mountains. The combination of such peculiar characters as slightly broadened male tarsi, completely flat elytral intervals with confused rows of relatively small punctures, which are hardly visible and concealed by secondary puncturation, readily distinguish the new species in the subgenus. *Ch. borochorensis* and *Ch. boreosinica* have somewhat similar aedeagus shape (Fig. 12), but both have dilated male tarsi, regular rows of large and dense elytral punctures with flat or convex intervals and shallow pronotal impressions. In some species from Dzhungarian Alatau, namely *Ch. kryzhanovskii* (Lopatin, 1968) and *Ch. valichanovi* Lopatin, 1990, males also have flat elytral intervals, but in females intervals are convex. The new species has flat elytral intervals in both sexes and different aedeagus shape.

ETYMOLOGY. The name is derived from the Latinized common local name Chingil (also Chingil or Qingil) of the Qinghe County, where the type locality is situated.

ACKNOWLEDGEMENTS

I am grateful to Dr. Il'ya Kabak (All-Russian Institute of Plant Protection, St. Petersburg), who kindly shared the collected material, to Dr. Lukáš Sekerka (Národní muzeum, Prague, Czech Republic) for the possibility to work with the collection and to Dr. Kirill Makarov (Moscow Pedagogical State University, Moscow) for his help in taking photos of the beetles.

REFERENCES

- Bechyné, J. 1950. 7e contribution a la connaissance du genre *Chrysolina* Motsch. (Coleoptera, Phytophaga, Chrysomelidae). *Entomologische Arbeiten aus dem Museum G. Frey*, 1: 47–185.
- Bechyné, J. 1952. Achter Beitrag zur Kenntnis der Gattung *Chrysolina* Motsch. (Col. Phytoph. Chrysomelidae). *Entomologische Arbeiten aus dem Museum G. Frey*, 3: 351–385.
- Bieńkowski, A.O. 2001. A study on the genus *Chrysolina* Motschulsky, 1860, with a checklist of all the described subgenera, species, subspecies, and synonyms (Coleoptera: Chrysomelidae: Chrysomelinae). *Genus*, 12: 105–235.
- Bieńkowski, A.O. 2007. *A monograph of the genus Chrysolina Motschulsky, 1860 (Coleoptera, Chrysomelidae) of the world. Part 1*. Techpolygraphcentre, Moscow. 417 pp.
- Bieńkowski, A.O. 2019. *Chrysolina of the world – 2019 (Coleoptera: Chrysomelidae). Taxonomic review*. Mukhametov G.V. Publ., Livny. 919 pp.
- Bourdonné, J.-C. 2010. New acts and comments. P. 65. In: *Catalogue of Palaearctic Coleoptera. Vol. 6*. Apollo Books, Stenstrup, 924 pp.
- Fairmaire, L. 1887. Notes sur les Coléoptères des environs de Pékin (1re Partie). *Revue d'Entomologie*, 6: 312–335.
- Gressitt, J.L. & Kimoto, S. 1963. The Chrysomelidae (Coleopt.) of China and Korea, part 2. *Pacific Insects Monograph*, 1B: 301–1026.
- Kippenberg H. 2010. New acts and comments. P. 68. In: *Catalogue of Palaearctic Coleoptera. Vol. 6*. Apollo Books, Stenstrup, 924 pp.
- Kippenberg H. 2010a. Subfamily Chrysomelinae Latreille, 1802. P. 390–443. In: *Catalogue of Palaearctic Coleoptera. Vol. 6*. Apollo Books, Stenstrup, 924 pp.
- Mohr, K.-H. 1966. Bestimmungstabelle der Untergattung *Pezocrosita* Jacobson 1902 (*Allohypericia* Bechyne 1950). *Reichenbachia*, 8(13): 89–104.
- Yang X.-K., Ge S.-Q., Wang S.-Y., Li W.-Z. & Cui J.-Z. 2014. *Fauna Sinica. Insecta Vol. 61. Coleoptera, Chrysomelidae, Chrysomelinae*. Science Press, Beijing. 641 pp. [In Chinese with English summary]
- Yang X.-K., Ge S.-Q., Nie R., Ruang Y.-Y. & Li W.-Z. 2015. *Chinese Leaf Beetles*. Science Press, Beijing. 507 pp.